



[www.vdo.com](http://www.vdo.com)

# The SingleViu™ family – Diversity that is convincing!

The new round-shaped instruments from VDO.



**VDO**

# SingleViu – well-rounded!



For almost 90 years, VDO has ensured that all aspects of your instrumentation run smoothly.

The SingleViu series\* – these are the new round-shaped instruments from VDO with one display per device that ensures an excellent overview and ease of use. They are versatile, flexible and suitable for a wide range of applications on the market. Thanks to the latest technology, they are also best equipped for the future. They provide all the functions of the predecessor WWG, ViewLine and CANcockpit instruments and are suitable for markets such as agriculture and construction. A total of 74 variants are available for initial equipping, for retrofitting or for replacing existing instruments.

The round gauges are available in the following versions:

- **Diameter 52 mm**  
Temperature, tank, pressure, engine rpm, DEF/AdBlue, voltage and current indicators, operating hours counter
- **Diameter 80/85 mm**  
Speed and engine rpm indicators
- **Diameter 100 mm**  
Speed and engine rpm indicators

\* The SingleViu™ name is protected in the EU, NAFTA and China.

# Be able to do more – with CAN and analogue!

The SingleViu single instruments have a dual input. This allows operation both with analogue signals as well as digitally with CAN bus.



## Advantages at a glance.

- Dual input for digital CAN bus connection (CAN SAE J1939) and commercially available analogue sensors
- Adaptable sensor curve (52 mm), adaptable pulse count (80/85, 100 mm)
- Can be configured at the push of a button or with the SingleViu ConfigTool
- Cable harnesses available in the spare parts market can be adapted
- Simple and easy to install front mountable
- With MX150 vehicle plug connection

# Robust and versatile.

Superb quality and robustness mean SingleViu round-shaped instruments can be used in a wide range of weather and environmental conditions. The double-glazed and shock-resistant mineral glass prevents fogging and damage, even under the harshest conditions.



## Advantages at a glance.

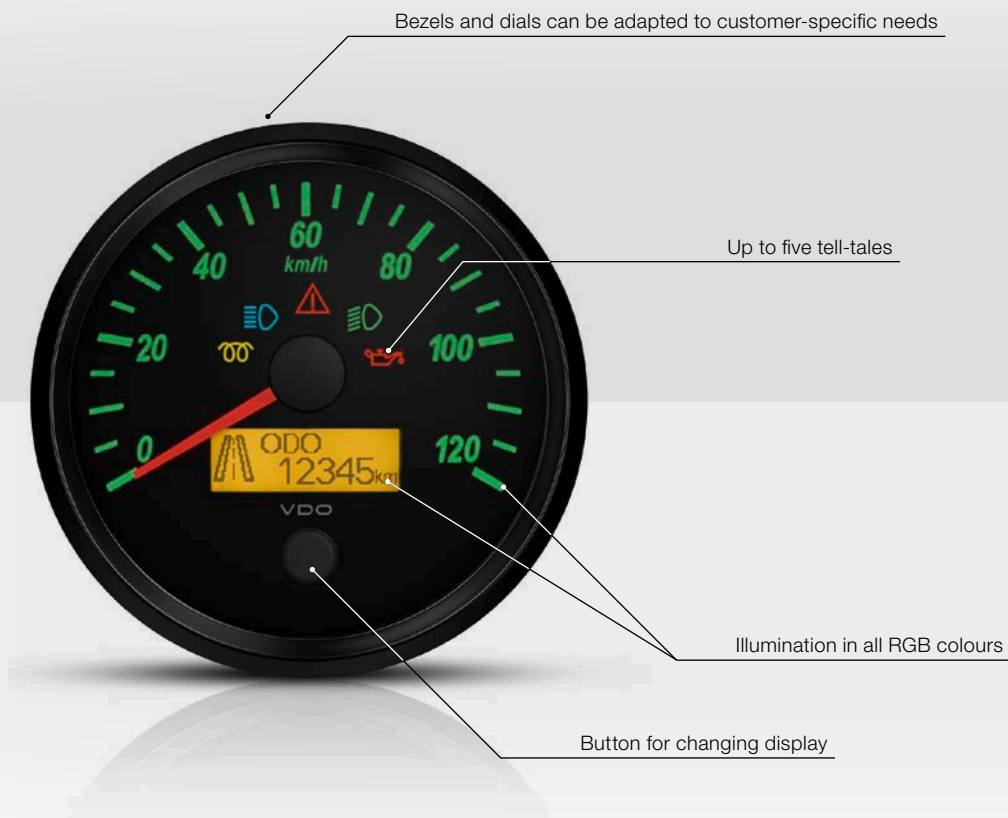
- Shock and vibration-resistant
- Double glazing system prevents fogging
- Anti-reflective coating
- High resistance thanks to mineral glass pane
- Protection class IP67
- Voltage range: 8 to 32 V
- Flame-resistant housing
- Operating temperature range -40 °C to +80 °C

# Individual and ergonomic.

The SingleViu family also impresses in design with variety and ease of readability. This ensures a consistent appearance throughout the entire series.

## Advantages at a glance.

- 240° display angle
- Background illumination for dial and display in all RGB colours
- Both dial and display are available in different coloured illuminations
- Display and internal pushbutton in 80/100 mm round-shaped instruments
- Various additional information in the operating menu on the display
- Up to five possible tell-tales
- Bezels in various shapes, materials and colours





**Continental Automotive GmbH**

Sodener Straße 9  
65824 Schwalbach am Taunus  
Germany  
Telefon: +49 6196 87-0  
info@vdo.com  
www.vdo.com

VDO – A trademark of the Continental Corporation

**Continental Automotive GmbH**

Heinrich-Hertz-Straße 45  
78052 Villingen-Schwenningen  
Germany  
info@vdo.com  
www.vdo.com

The information provided in this brochure contains only general descriptions or performance characteristics, which do not always apply as described in case of actual use or which may change as a result of further development of the products. This information is merely a technical description of the product. It is not meant or intended to be a special guarantee for a particular quality or particular durability. An obligation to provide the respective characteristics shall only exist if expressly agreed in the terms of contract. We reserve the right to make changes in availability as well as technical changes without prior notice.

Continental Automotive GmbH | English © 2017  
Printed in Germany