

COCKPIT WHITE

Cockpit White offers an alternative appearance to conventional black face dials, developed from VDO's strength and commitment to the automotive industry to provide a low cost range of gauges suited to a broad range of applications. These reliable gauges feature easy to read flood lit dial illumination for a fantastic look.

SPEEDOMETERS, automotive

Illumination through dial and pointer. 12V globe included.

Field adjustable to suit 500 to 400,000 imp/km by pulse setting, or auto-calibration function through LCD readout via reset button. Total distance 999,999.9 not resettable. Speed display analogue; Odometer and trip distance LC-display trip distance 99,999.9 resettable.

Signal source Hall-effect, inductive or blocking oscillator sender units.

For 24V application use globe #240.053 (2 required).

For matching sender units refer to page 83.



Speedometer - Electronic

Part No.	Range	Size	Voltage
437.202	0 - 120mph	85mm	12/24V
437.100	0 - 280km/h	100mm	12/24V

Note: 8 pin plug kit part no. 340.824 recommended. Not included in kit.

PITOT TUBE SPEEDO, marine

The Pitot Tube Speedo is designed to determine the speed of a boat over water. It consists of a pitot tube foot and hose to transfer air pressure to the speedo head system where the air pressure is converted to speed.

Speedometer - Pitot Tube

Part No.	Range	Size	Voltage
170.701	50Kn	85mm	12V

Accessories

Part No.	Description
170.702	Pitot tube assembly black



TACHOMETERS

Field programmable to suit 4, 6 or 8 cylinder, four stroke petrol engines with coil pickup or alternator pick-up (terminal "W") on diesel applications. Illumination 12V included. Single phase, not suitable for star point or magneto system.



Tachometer - Electronic

Part No.	Range	Size	Voltage
333.100	0 - 8000rpm	100mm	12V
333.255	0 - 7000rpm	85mm	12V

Note: 8 pin plug kit part no. 340.824 recommended. Not included in kit.



TACHOMETER COLUMN MOUNT

Tachourmeter - Column Mount - Kit

Part No.	Range	Voltage
333.255POD	0 - 7000rpm	12V

Note: Kit includes gauge, tacho and wiring.

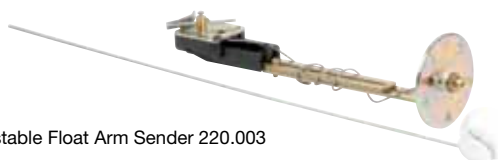


FUEL GAUGE, electrical

Suitable for use with most petrol and diesel fuel. Illumination 12V and 24V included.

Fuel Gauge	52mm		
Part No.	Range	Size	Voltage
301.216	Fuel gauge float arm	10 - 180 ohms	12V

Note: 3 pin plug kit part no. 240.030 recommended. Not included in kit.



Adjustable Float Arm Sender 220.003

Sender - Adjustable Float Arm

Part No.	Specifications	Length
220.003	10 - 180 ohms	150 - 600mm

Note: Mounting kit part no. N05801432 not included in kit.



Arm Type Fuel Sender

Arm Type Fuel Sender

See complete listing of arm type fuel senders on page 81.

Note: Mounting kit part no. N05801432 not included in kit.



Reed Switch Sender

Reed Switch Sender Fuel & Water

Just for 10 - 180 ohms gauges.

See complete listing of reed switch senders on page 81.

Note: Mounting kit part no. N05801432 not included in kit.



Flange Mounting Kit N05801432

Accessories

Part No.	Description	PCD
N05801432	Flange mounting kit	54mm

Note: More Accessories, refer to pages 88 - 91.

PRESSURE GAUGE, electrical

Suitable for most vehicles.
 Illumination 12V included.
 Adaptors are listed on page 80.

Electric Pressure Gauge - 80psi / 500Kpa		52mm
Part No.	Specifications	Voltage
350.240	80psi (500Kpa)	12V

Note: 3 pin plug kit part no. 240.030 recommended. Not included in kit.

Sender			0-180 ohms
Part No.	Range	Thread	Terminal
360.001	500Kpa	1/8"-27NPTF	Spade
360.004	500Kpa	1/4"-18NPTF	Button
360.016	500Kpa	1/8"-28BSBT	Button
360.018	500Kpa	1/8"-27NPTF	M4 thread
360081030049K	5 Bar / 7 psi SW	1/8"-27NPTF	M4 thread

Refer to your engine manufacturers manual for correct oil pressure ratings.

Note: 500 Kpa = 5 Bar = 72.5 psi 700 Kpa = 7 Bar = 101.5 psi
 1000 Kpa = 10 Bar = 145 psi 2800 Kpa = 28 Bar = 406 psi



Sender 360.001

PRESSURE GAUGE, mechanical

Suitable for most vehicles.
 Supplied with nut and cone for 3/16" PVC tubing.
 Illumination 12V included.

Electric Pressure Gauge		52mm
Part No.	Specifications	Voltage
150.202	0 - 100psi	12V

Accessories	
Part No.	Description
230.012	1.8m fitting kit - 3/16" PVC tubing & engine fitting
230.013	5m fitting kit - 3/16" PVC tubing & engine fitting
230.008	Nut and cone for 3/16" PVC tubing, M12x1.5 thread
230.024	Engine fitting 1/8"-27NPTF male, 3/16" PVC tubing
230.025	Nut and cone 1/8"-27NPTF nut



Oil line kit 230.012



Nut and cone 230.008



Engine fitting 230.024



Nut and cone 230.025

TURBO CHARGER GAUGE, mechanical

Suitable for vehicles.

Supplied with nut and cone to suit 3/16" PVC tubing.

Illumination 12V included.



Engine fitting 230.024



Nut and cone 230.025

Turbo Charger Gauge		52mm
Part No.	Description	Specification
150.206	"TURBO" on dial	-30"HG/+25psi

Hg = Negative 30 inches of vacuum of mercury.

Note: Use airline kit 230.012 or 230.013

Accessories on page 10.

Air Restrictor: X39732002001

Accessories

Part No.	Description
230.012	1.8m fitting kit - 3/16" PVC tubing & engine fitting
230.013	5m fitting kit - 3/16" PVC tubing & engine fitting
230.008	Nut and cone for 3/16" PVC tubing, M12x1.5 thread

Note: For more Accessories, refer to pages 88 - 91.

EXHAUST TEMPERATURE / PYROMETER, electrical

Suitable for most exhaust systems. Thermocouple connection is by 1/4"-18 compressing fitting.

This kit features the VDO "Spin-lock" fastening system illumination 12V included.

Adaptors are listed on page 80.



Thermocouple 320.714

Pyrometer - Electrical Kit		52mm
Part No.	Range	Voltage
310.240	250 - 1600°F	12V

Complete kit - consisting of instrument, thermocouple, 5m loom.

Spare Parts for 310.240 exhaust temperature/pyrometer kit

Part No.	Description
320.714	Thermocouple 1/4" NPTF non bonded junction "K" type
240.035	Loom, 5m
320.059	Weld boss 1/4" - 1/8" NPTF

TEMPERATURE GAUGE, electrical

Suitable for most vehicles.

Illumination 12V included.

For more matching sender units refer to page 78.

Adaptors are listed on page 80.

Temperature Gauge - Water			52mm
Part No.	Description	Specifications	
310.239	Electrical temp gauge	100 - 250°F, 12V	

Note: 3 pin plug kit part no. 240.030 recommended. Not included in kit.

Sender				
Part No.	Range	Thread	Terminal	Body Type
320.002	100 - 250°F	1/8"-27NPTF	button	a
320.093	100 - 250°F	1/8"-27NPTF	M4 thread	b
323.801/005/001	100 - 250°F	1/8"-27NPTF	button	a
320.022	100 - 250°F	1/2"-14NPTF	spade	c
323801001006K	100 - 250°F	M14x1.5mm	spade	c
320.004	100 - 250°F	M16x1.5mm	button	a

Note: 40 - 120°C = 100 - 250°F

For calibration specs, see page 92.



a.



b.



c.



TEMPERATURE GAUGE, mechanical

Suitable for most vehicles.

Process connection is via 1/2"-14NPTF wet bulb.

Temperature is transmitted via capillary tube.

Coil up excess capillary tubing - do not cut to shorten!

Illumination 12V included.

Adaptors are listed on page 80.

Temperature Gauge - Water				52mm
Part No.	Description	Range	Capillary Length	
180.204	Mechanical temp gauge	120 - 260°F	2438mm (96")	



VOLTMETER

Suitable for all engines.
Illumination 12V or 24V included.



Voltmeter		52mm
Part No.	Description	Voltage
332.241	Voltmeter	8 - 16V

Note: 2 pin plug kit part no. 240.031 recommended. Not included in kit.

INSTRUMENT KIT

Cockpit White Kit

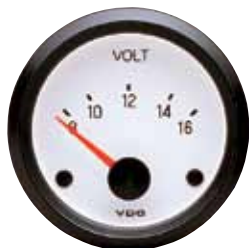
Part No.	Description
740.104	Gauge kit

Note: Wiring and terminals not included.



Kit Contents - Gauges

Part No.	Description
350.240	Oil Pressure (52mm)
310.239	Water Temperature (52mm)
301.216	Fuel (52mm)
332.241	Volt Meter (52mm)
333.255	Tachometer (85mm)



Kit Contents - Senders

Part No.	Description
360.001	Oil Pressure
320.002	Water Temperature
220.003	Fuel

Note: Speedo & other gauges not part of the kit and can be purchased separately.



Sender 360.001



Sender 320.002



Adjustable Float Arm Sender 220.003